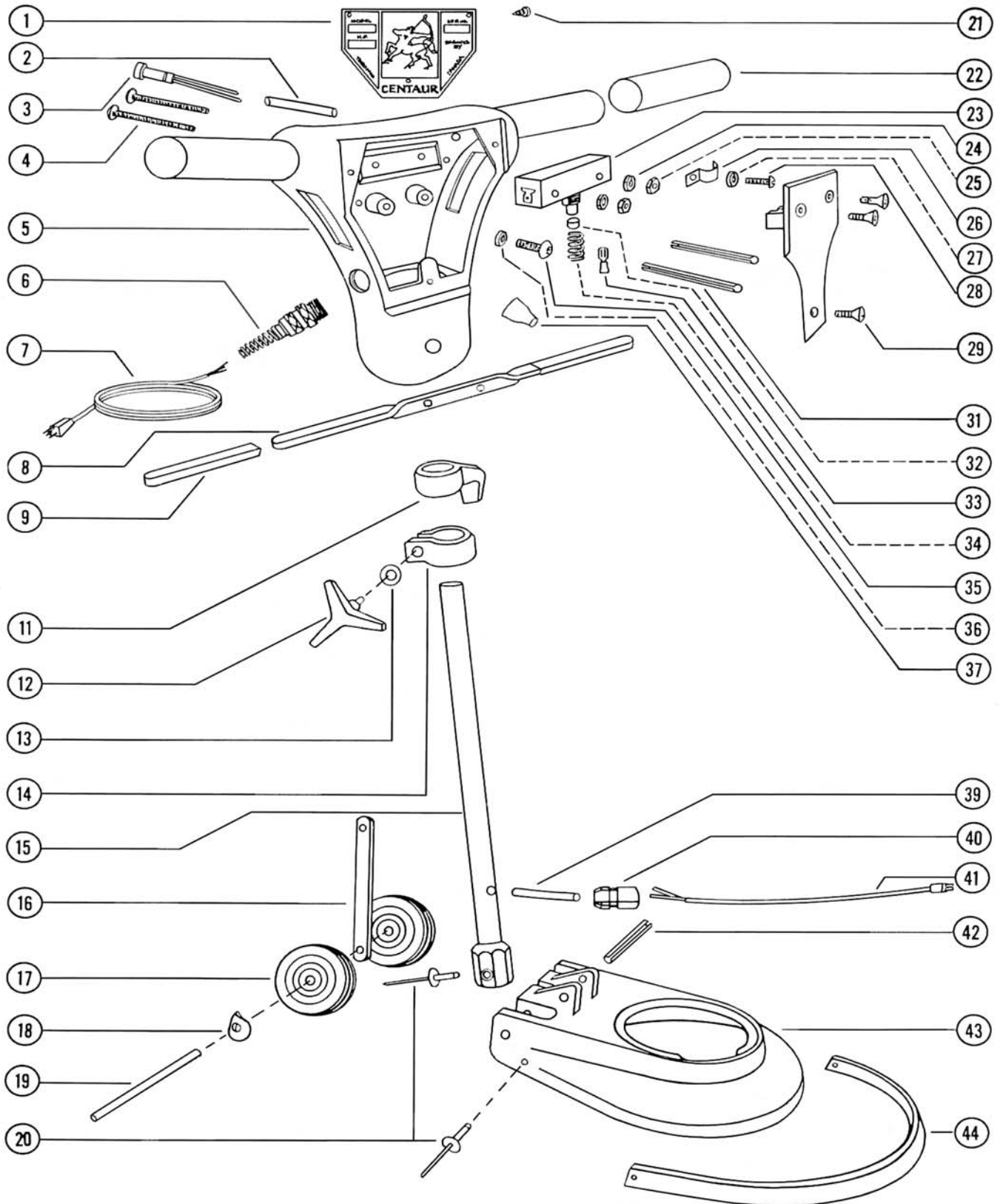


Model 17 & 19 Polisher exploded view



Model 17 & 19 Polisher exploded view

1	2E05801	Alum.name plate (obsolete)	24	6K01803	Lock washer #6
2	7D10140	Insulating sleeve	25	6D01800	Nut, hex
3	7D90500	Indicator light	26	2E99900	Clamp for wire (obsolete)
4	6A06200	Mach Screw 6x32x1-1/4 (obsolete)	27	6K01905	Lock washer #8
5	2E90000	Switch box (obsolete)	28	6A10101	Mach Screw #8
6	2E90803	Strain reliever,300v cable	29	6A14900	Mach Screw #10
7	7C90101	Cable 50ft 300v insulation	31	2E98401	Roll pin 3/16 (obsolete)
	7D10420	Male plug 3 prong	32	2E99700	Red cap (obsolete)
8	2E91300	Trigger	33	7D62700	Terminal (yellow)
9	2E97600	Sleeve for trigger	34	2E97800	Spring
11	2E91612	same as #14	35	6A14900	Mach Screw #10
12	2E91700	Tri-nut	36	6K02006	Lock washer #10
	6A44600	Mach Screw 3/8x2"	37	7D10000	Nylon pigtail
13	6K02400	Washer, flat SAE	39	7D10140	Insulating sleeve
14	9X91610	Tension collar-cord hook	40	2E90802	Strain reliever
		the above item NOT for resale.	41	7C54503	Tube Cable (Rabbit)
		for replacement use: 2E91612	42	2E50112	Hitch pin with ring
		Replacement collar-cord h.	43	2E92810	Base, mod 17(obsolete)
15	2E92101	Tube & socket assembly		2E9282	Base mod 19 (obsolete)
16	2E93601	Adjusting bar	44	2E93900	Bumper (obsolete)
17	2E93700	Wheel 5" dia.		2E94000	Bumper model 16
18	6K02500	Tension washer		2E94001	Bumper model 17
19	2E93500	Wheel axle (short)		2E94002	Bumper model 19
	2E93501	Wheel axle (long)		2E94003	Bumper model 22
20	6F21400	Rivet 3/16x1	45	6N10000	"O" ring
21	2E02100	Tapping screw #4		7D54705	Fantail, strain reliever
22	2E94900	Handle grip from s/n 8800			
	2E94901	Handle grip from s/n 0 to 8800			
23	7D90900	Switch for Rabbit			
	7D91000	Switch regular polisher (obsolete)			
	7D91100	Switch for old model 19			