



Burnisher prt#.2W22101 Assembly page 1.

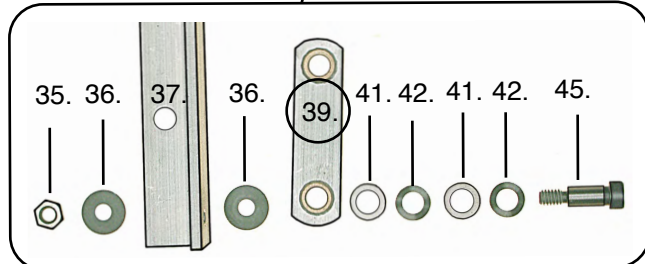
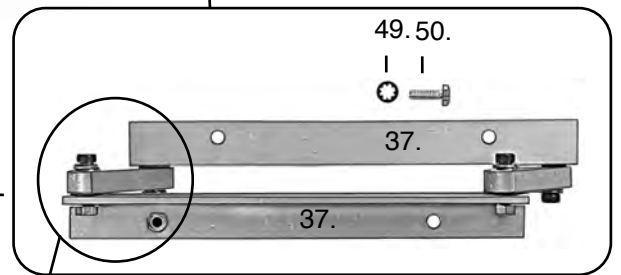
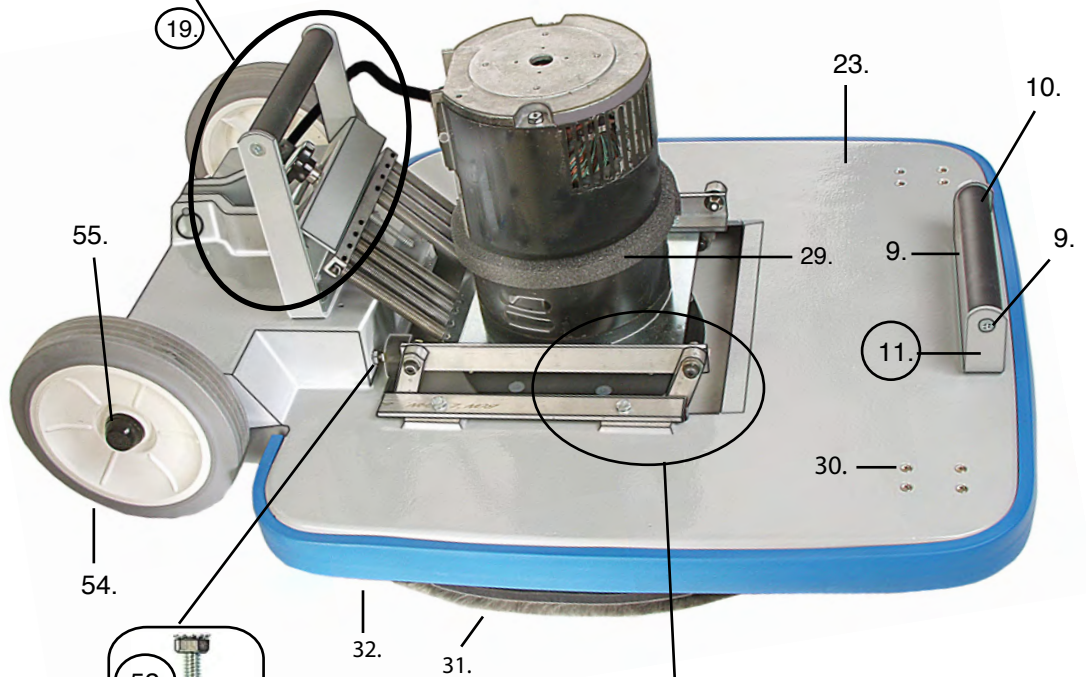
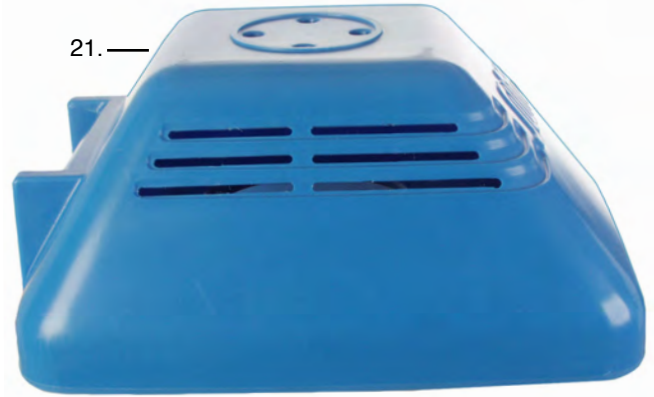
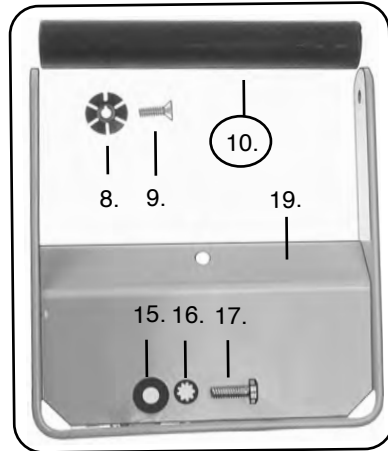
1. —
2. —
3. —
5. —

1. 6E10500 Screw #8
2. 6K02000. Washer, flat
3. 6E02100 Scr.tapping #4-1/4
5. 2E05807 Name plate
10. 2E50350 Lifting handle assy.
 consist of:
 - a. 9F03310 Steel tube
 - b. 9X50380 Shrink lock
 - c. #8. 6K02208 Helix washer
 - d. #9. 6A30710 Mach.screw Flat head

11. 2E50370 Front handle
 consist of:
 - a. #10 2E50350 Lifting handle assy.
 - b. 9H90085 "U" bracket
15. 6K02202 Flat washer
16. 6K02203 Lock washer, tooth
17. 6A30700 Mach.scr.hex head
19. 2E50360 Rear handle assembly
 consist of:
 - a. 9H90081 "U" bracket
 - b. #10. 2E50350 Lifting handle

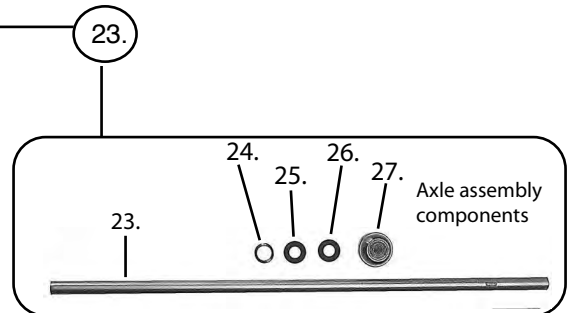
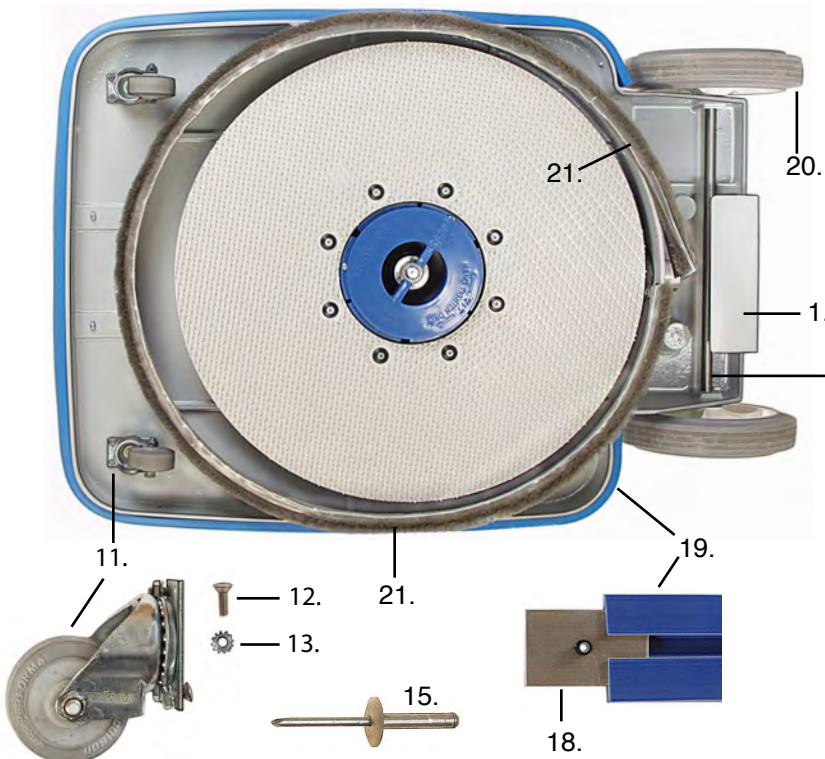
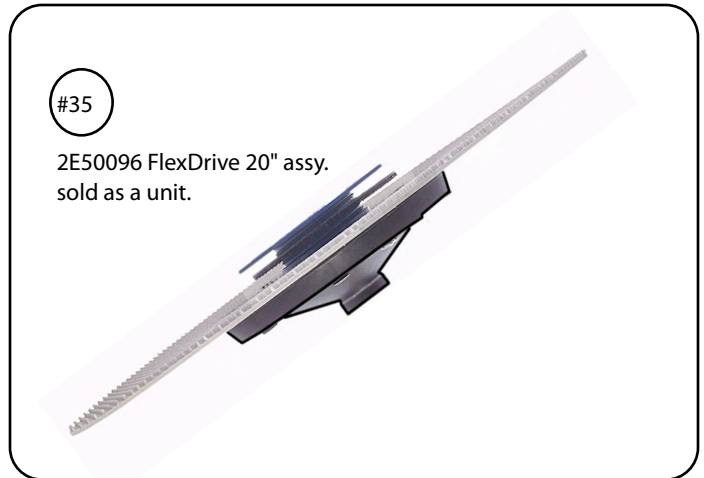
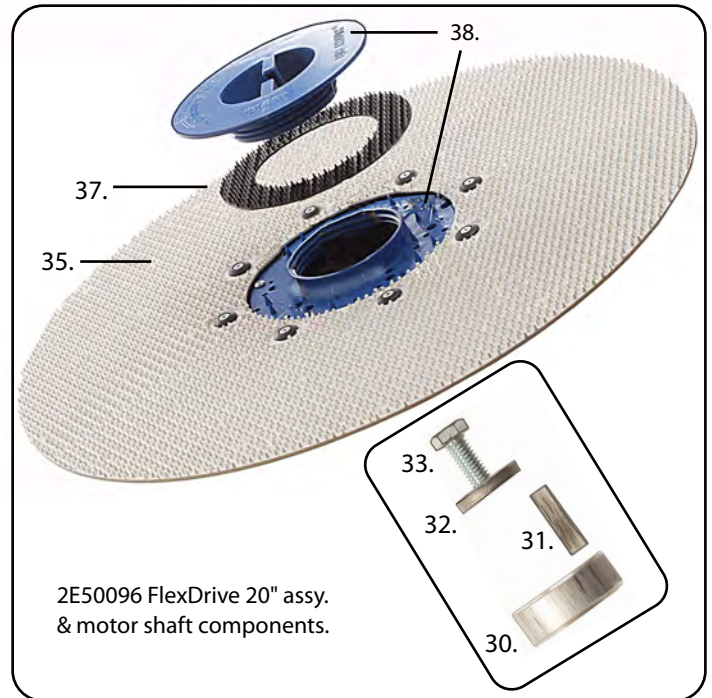
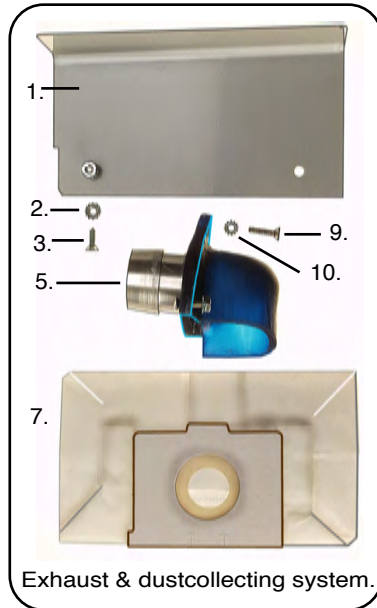
21. 2E50400 Motor cover
23. 2E92825 Base, Aluminum
27. 2E50370 Front handle frame
29. 2E50410 Air seal, foam
30. 6A10600 Machine Screw
31. 2E50020 Dust seal
32. 2E93902 Bumper
35. 6D02805 Nut SAE 1/4
36. 6L00600 Spring disc
37. 2E50070 Linkage mount bar
38. 2E50060 Complete assembly
39. 2E50080 Link with bearings consist of:
 - a. 9V30101 bearing
 - b. 9A22900 aluminium bar
41. 6K02302 Washer, style BB
42. 6L00800 Tension washer
45. 6A30600 Mach.shoulder scr.
49. 6K02203 Lock washer
50. 6A30700 Mach.screw 1/4"
52. 2E50211 Linkage stop assy. consist of:
 - a. 2E50210 Rubber stop
 - b. 6A31300 Mach. screw
 - c. 6D02805 Nut
 - d. 6D02803 Nut, keps
 - e. 6K02206 Washer

54. 1E66600 Wheel
55. 6J66800 Hub cap nut

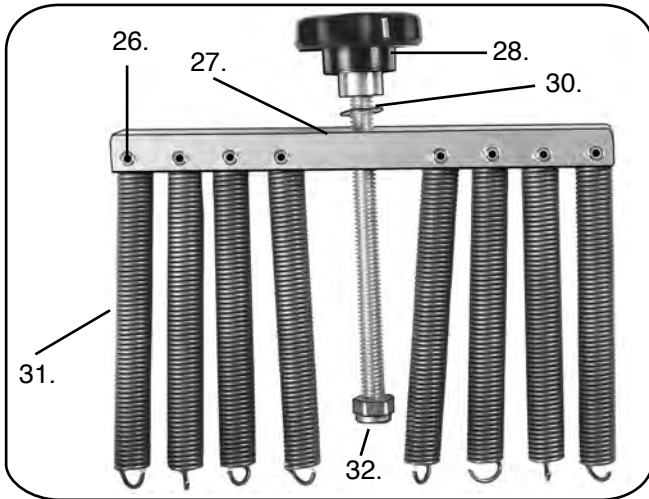
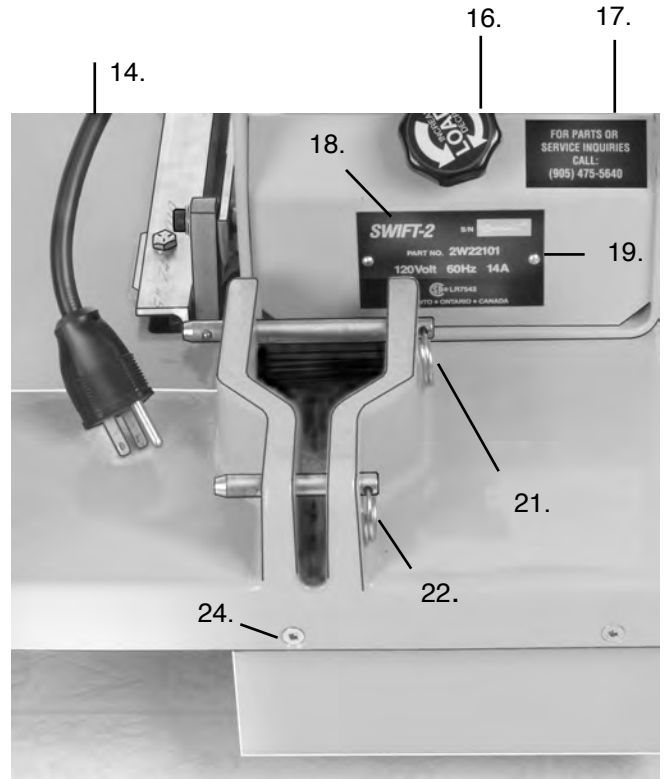
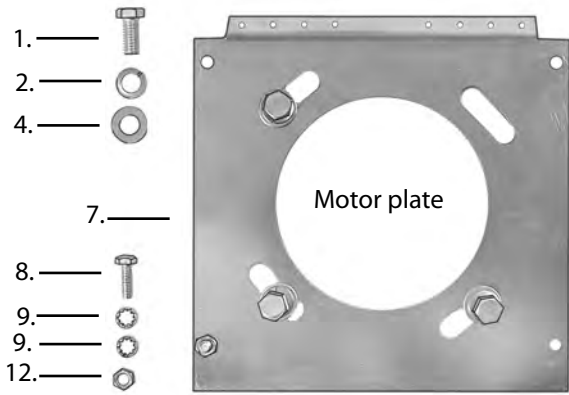


Swift Burnisher prt#.2W22101 Assembly page 2.

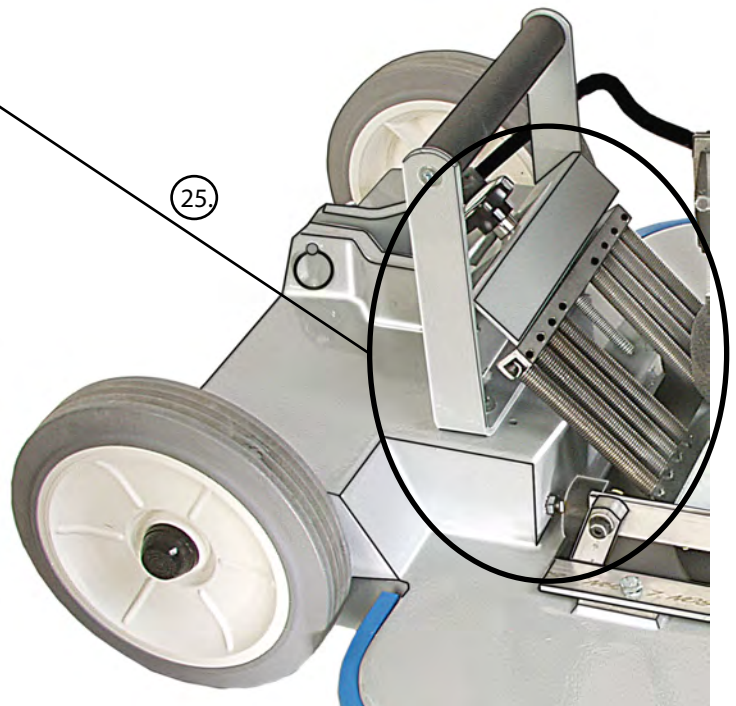
- 1. 2E50027 aluminum bracket
- 2. 6D02202 Nut
- 3. 6A14900 Screw
- 5. 2E50026 Air deflector
- 7. 2E50430 Paper bag
(package of 10pcs)
- 9. 6A10600 Screw, Phillips
- 10. 6D02002 Nut, keps
- 11. 2E50050 Caster
- 12. 6A10600 Screw
- 13. 6D02002 Nut, keps
- 15. 6F21400 Rivet
- 18. 2E50215 Bumper fastener
- 19. 2E93902 Bumper
- 20. 1E66600 Wheel
- 21. 2E50020 Dust seal
- 23. 2E50030 Axle
- 24. 6K02600 Tension washer
- 25. 6K02601 Washer
- 26. 6K02601 Washer
- 27. 6J66800 Hub Cap & Nut
- 30. 2E50098 Spacer
- 31. 7A96001 Sq. Key
- 32. 6K02407 Washer 1-3/8"
- 33. 6A37500 Mach.screw 5/16"
- 35. 2E50096 FlexDrive 20" assy. consist of:
 - e. 35. 9M50096 Flex drive
 - f. 37. 2A80204 Thin (black) washer
 - g. 38. 2A80215 Center-lock assy.
 (Center-lock screw & its base sold as a pair)



SWIFT Burnisher prt#.2W22101 Assembly page 3.

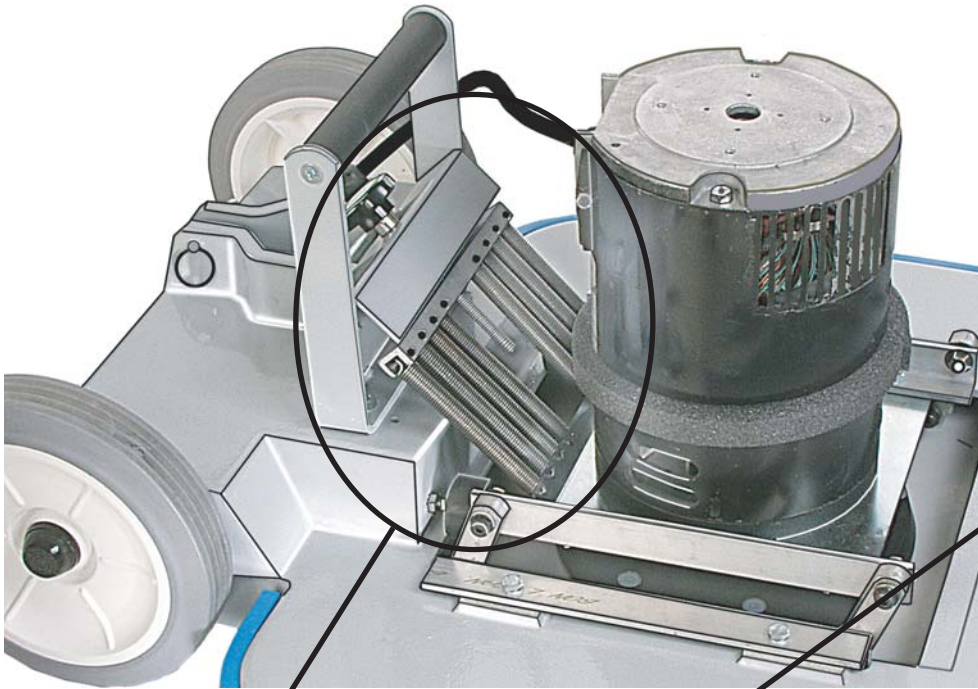


- 1. 6A43700 Mach.screw 3/8"x3/4"
- 2. 6K02408 Washer, lock
- 4. 6K02400 Flat washer
- 7. 2E50300 Motor plate
- 8. 6A30700 Machine screw 1/4"x 3/4"
- 9. 6K02203 Lock Washer
- 12. 6D02805 Nut grade 8-1/4"
- 14. 7C54504 Motor cable 56 frame Swift
- 16. 2E50200 Knob assembly
- 17. 1E05402 Decal
- 18. 2E05812 Data plate
- 19. 6F13301 Rivet type U drive screw.
- 21. 2E50112 Pull-pin 3-1/4" long
- 22. 2E50111 Pull-pin 1-1/2" long
- 24. 6A14900 Mach. screw flat head
- 26. 2E50190 Roll pin
- 25. 2E50028 Adjusting bar assembly
 - a. 26. 2E50190 Roll pin (8)
 - b. 27. 2E50180 Spring Bar
 - c. 28. 2E50200 Knob assembly
 - d. 31. 2E50160 Spring (8)
- 30. 6K02302 Washer style BB
- 32. 6D03001 Hex nut, nylon ins.5/16"

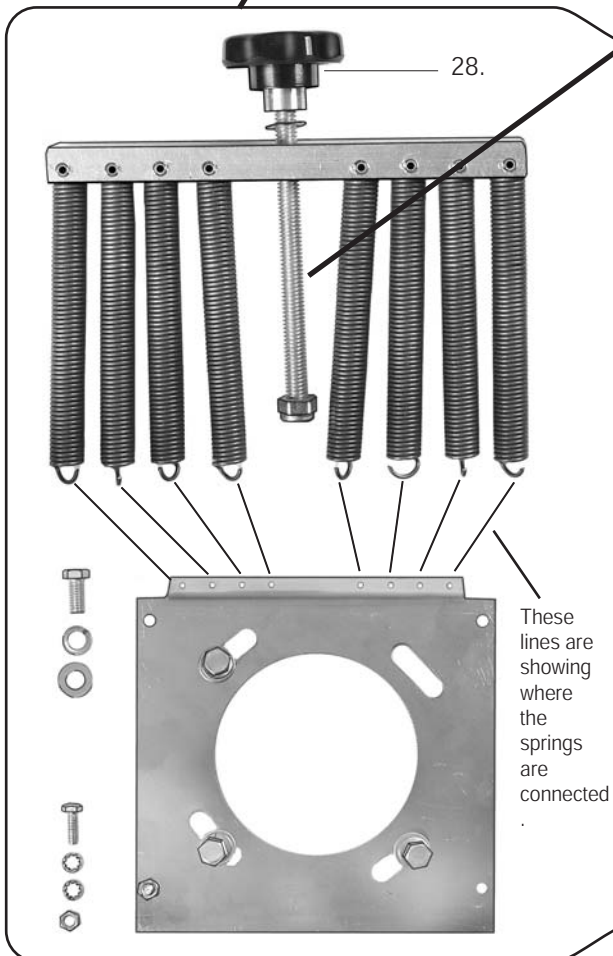


SWIFT Burnisher prt#.2W22101 Trouble shooting

filename: SwftExploded4.ai date: 2002-8-7



The correct Ampere reading lies around this half point.



If the machine blows fuse and the Ampere metre reads high current yet you can't adjust the Ampere metre to read less or eliminate fuse blowing do the following.

Probably the pad is sitting on the floor with the weight of the motor on it. Either the pad is too thick or the pad pressure is wrongly adjusted. The fuse cannot handle this excessive pressure. Assuming that you read the instruction on the adjusting knob and your attempt to turn it a few time brought no result, here is the explanation. The adjusting knob #28 is threaded into a 4 inch long screw. This screw controls 8 springs that regulate the pad pressure. It takes about 70 (seventy) turns to move the screw its entire length. Hence it takes many turns to let the springs completely loose or tighten them entirely. If your machine is so severely maladjusted that the screw is at either end of its length (the spring is either completely loose or completely tight) it takes approximately 35 turns to make the Ampere metre read the correct Amperage (just below the red line).

A word of caution. We are not suggesting that you **MUST** turn the knob 35 to 70 times to get results. Likely it will need fewer turns to get a satisfactory outcome. We only have pointed out the extreme so you are aware of it. Also make sure that the pad thickness ranges from 7/8 to 1 inch.